

DEPARTMENT OF
PRIMARY INDUSTRIES



Ovine mouth pathology

in Victoria, Australia

Published by: Department of Primary Industries
Wodonga, Victoria, Australia, September 2005

© The State of Victoria, 2005

This publication is copyright. No part may be reproduced by any process except in accordance with the provisions of the Copyright Act 1968.

Authorised by: Victorian Government
1 Treasury Place
Melbourne, Victoria
3000 Australia

Printed by: [Name and address of printer] [Could be on multiple lines as above]

ISBN: 1 74146 570 2

Disclaimer

This publication may be of assistance to you but the State of Victoria and its employees do not guarantee that the publication is without flaw of any kind or is wholly appropriate for your particular purposes and therefore disclaims all liability for any error, loss or other consequence which may arise from you relying on any information in this publication.

For more information about DPI visit the website at www.dpi.vic.gov.au or call the Customer Service Centre on 136 186.

Acknowledgments.

This book is a combination of work contributed by Dr Jeff Cave, Ms Fiona Dean, Mr Lachlan King, Dr Leanna Dries, Ms Leanne Jones, Mr Roger MacInnes, Mr Richard Keys and other DPI Animal Health and Welfare field staff. We also gratefully acknowledge many Victorian sheep producers for making their flocks available for inspection.

FOREWORD

The FMD outbreak in the UK in 2001 highlighted the difficulties in relying on gross/visual inspection of the mouths of sheep as a surveillance inspection for FMD. Farmers and veterinarians are in general not familiar with the normal range of oral lesions found in ruminants, and the UK experience was that there is a significant variety of mouth pathology in sheep during normal conditions. It is reasonable to assume that the same applies in Victoria. Until now, a study has not been carried out to establish a baseline picture of what mouth pathology could be expected during a routine inspection. It is hoped that this guide will help rectify this situation, and provide a useful tool to guide veterinarians and animal health technicians in the field.



Dr Hugh Millar
Chief Veterinary officer
DPI Attwood



Dr John Galvin
Manager of Animal Health Operations
DPI Bendigo

PREFACE

It could be assumed that there is great variety of mouth pathology in sheep in Victoria during normal conditions. A survey was conducted to give a baseline picture of what mouth pathology could be expected during a routine inspection.

The survey was carried out by DPI animal health and welfare field staff visually inspecting a number of flocks at a variety of locations throughout Victoria in each of the four seasons over a 12-month period. Photographs of the more commonly seen lesions along with information relevant to the lesion's likely cause were collected.

The main outcome of the survey is this pictorial guide of the most commonly seen lesions along with the conditions with which they were associated.

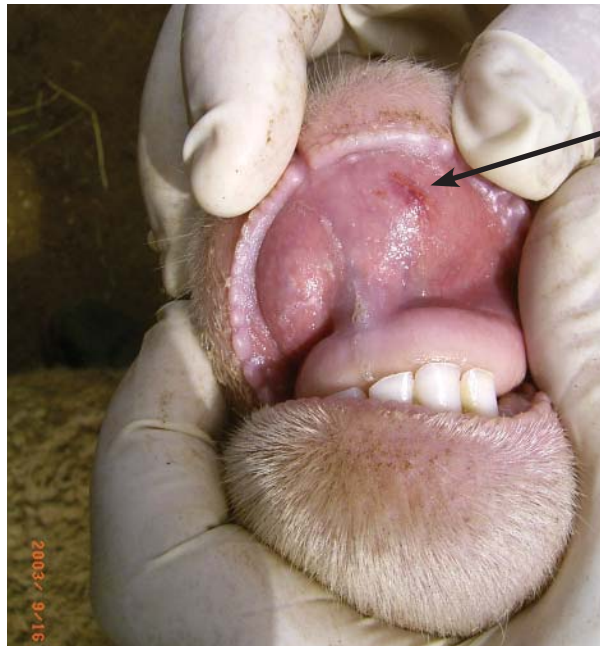
It is hoped that similar surveys will be conducted in other parts of Australia and in other species to give a better baseline picture of mouth pathology in production animals in Australia.

Plate	Lesion Type	Season	District
1	Erosion	Spring	Mallee
2	Nodule	Spring	Ararat
3	Nodule	Winter	South Gippsland
4	Abscess	Autumn	Ararat
5	Ulcer & Abscess	Autumn	Ararat
6	Erosion	Summer	Ballarat
7	Ulcer	Summer	Ballarat
8	Ulcer	Summer	South Gippsland
9	Ulcer	Summer	South Gippsland
10	Ulcer	Summer	Ballarat
11	Erosion	Summer	Ballarat
12	Ulcer	Autumn	Ballarat
13	Abrasion	Summer	Abattoir
14	Ulcer	Winter	Southern Wimmera

Plate	Lesion Type	Season	District
15	Cleft Palate	Spring	Ballarat
16	Healing Erosion	Spring	Ballarat
17	Staining	Spring	Ararat
18	Healing Lesion	Spring	North East
19	Healing Ulcer	Spring	Southern Wimmera
20	Hyperplasia	Spring	Abattoir
21	Healing Lesion	Summer	Ararat
22	Granuloma	Winter	Abattoir
23	Healing Ulcer	Spring	East Gippsland
24	Mouth Scabs	Spring	Ballarat
25	Mouth Scabs	Winter	North East
26	Dentition	Autumn	Abattoir
27	Tooth Abrasion	Autumn	Ararat

One -

Erosion on the upper lip of a four year old merino ewe on spring pasture on a property near Walpeup, Mallee.



Two -

Two nodules on the lower lip of a four year old merino wether on spring pasture on a property near Ararat.



Three -

Nodules on the lower lip of a three and a half year old merino wether on winter pasture on a property near Woodside, South Gippsland.



Four -

A burst abscess on the lower lip of a full mouth merino wether on autumn pasture on a property near Ararat.



Five -

Ulcer and abscess on the upper lip of a full mouth merino wether on autumn pasture on a property near Ararat.



Six - Multiple erosions on the lower gum of an 18 month old merino wether on summer pasture on a property near Ballarat.



Seven - Ulcer associated with an embedded barley grass seed on the lower gum of an 18 month old merino wether on summer pasture on a property near Ballarat.



Eight - Ulcer associated with an embedded barley grass seed on the lower gum of a two year old merino wether on summer pasture on a property near Woodside, South Gippsland. Twenty five percent of sheep in the mob of 227 had similar lesions.



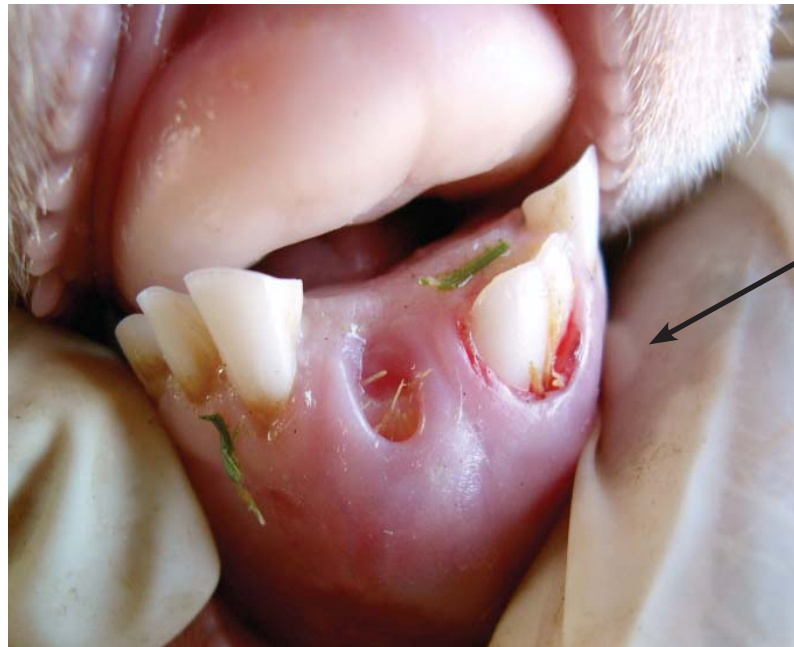
Nine -

Ulcers on the lower and upper gum of a two year old merino wether on summer pasture with an abundance of barley grass on a property near Woodside, South Gippsland. Twenty five percent of sheep in the mob of 227 had similar lesions.



Ten -

Ulcer associated with an embedded barley grass seed and tooth eruption in an 18 month old merino ewe on summer pasture on a property near Ballarat.



Eleven -

Erosion on the upper gum of a full mouth merino ewe on summer pasture on a property near Ballarat.



Twelve -

Healing ulcer on the lower gum of a two year old merino ewe grazing short autumn pasture on a property near Ballarat.



Thirteen - Abrasion on the upper gum of a three year old crossbred ewe taken at Ararat Abattoir in summer. The most likely cause of the abrasion is recent trauma.



Fourteen -

A large ulcer on the upper gum of a two year old merino wether grazing short green winter pasture on a property in the Southern Wimmera.



Fifteen -

Cleft palate in a full mouth merino ewe taken in spring on a property near Ballarat.



Sixteen -

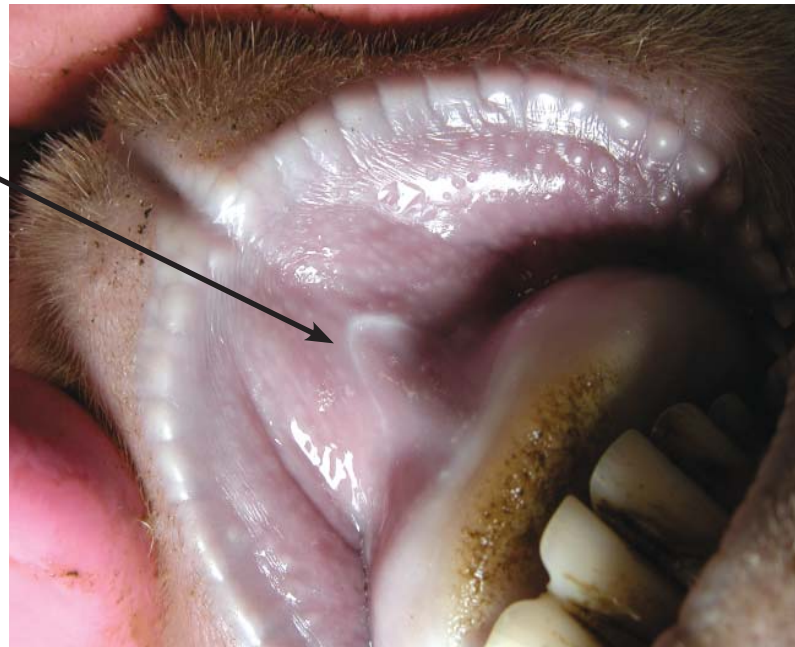
Healing erosion on the upper gum of a one year old merino ewe on spring pasture on a property near Ballarat.



Seventeen - Staining on the dental pad of a four year old merino wether on spring pasture on a property near Ararat. Approximately five percent of sheep in the mob of 60 had similar lesions.



Eighteen - Healing lesion on the upper lip of a full mouth merino wether on spring pasture on a property near Yarck, North Eastern Victoria.



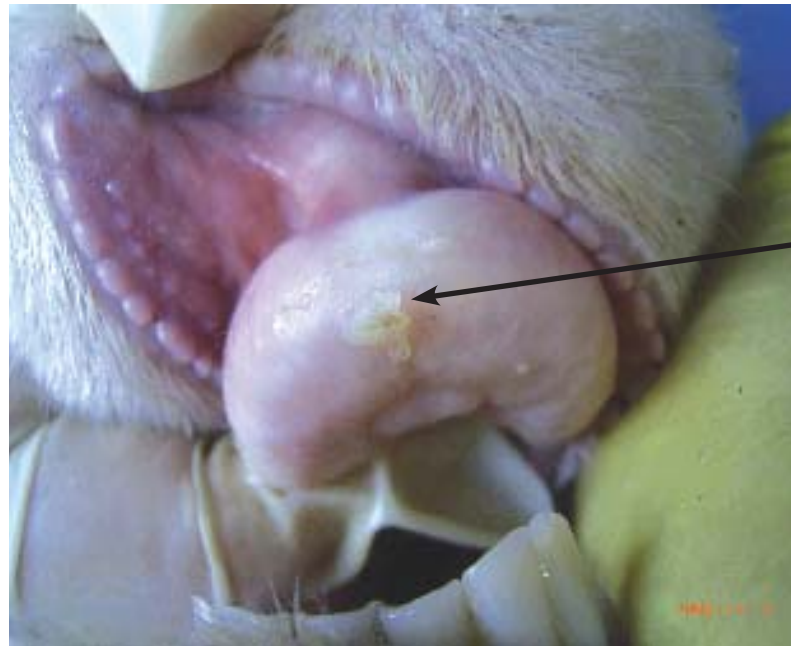
Nineteen -

Healing ulcer on the lower gum of an 18 month old merino wether on spring pasture on a property in the Southern Wimmera.



Twenty -

Hyperplasia on the dental pad of a full mouth merino wether taken at Ararat Abattoir in spring.



Twenty One - Healing lesion on the lower gum of a full mouth merino wether on summer pasture on a property near Ararat.



Twenty Two - Granuloma on the dental pad of a full mouth crossbred ewe taken at Ararat Abattoir in winter.



Twenty Three - Healing ulcer on the lower gum of a two year old merino ewe on spring pasture with drying barley grass on a property near Bairnsdale, East Gippsland. Five percent of sheep in the mob of 212 had similar lesions.



Twenty Four - Scabs primarily on the upper muzzle of a four year old merino ewe on spring pasture on a property near Ballarat.



Twenty Five - Scabs primarily on the lower muzzle of a four year old merino wether on winter pasture on a property near Yarck, North East Victoria.



Twenty Six - Excessive wear of incisor teeth in an aged crossbred ewe taken at Ararat Abattoir in autumn.



Twenty Seven - Tooth abrasion on the dental pad of a three year old merino wether on autumn pasture on a property near Ararat.



